

BIPARK

TECHNICAL SPECIFICATION



TECHNICAL SPECIFICATION BIPARK

Omer's Bipark is a compact double car stacker allowing you to park more cars in a finite space. It is engineered to be user-friendly and lift vehicles smoothly, quickly and safely into position.

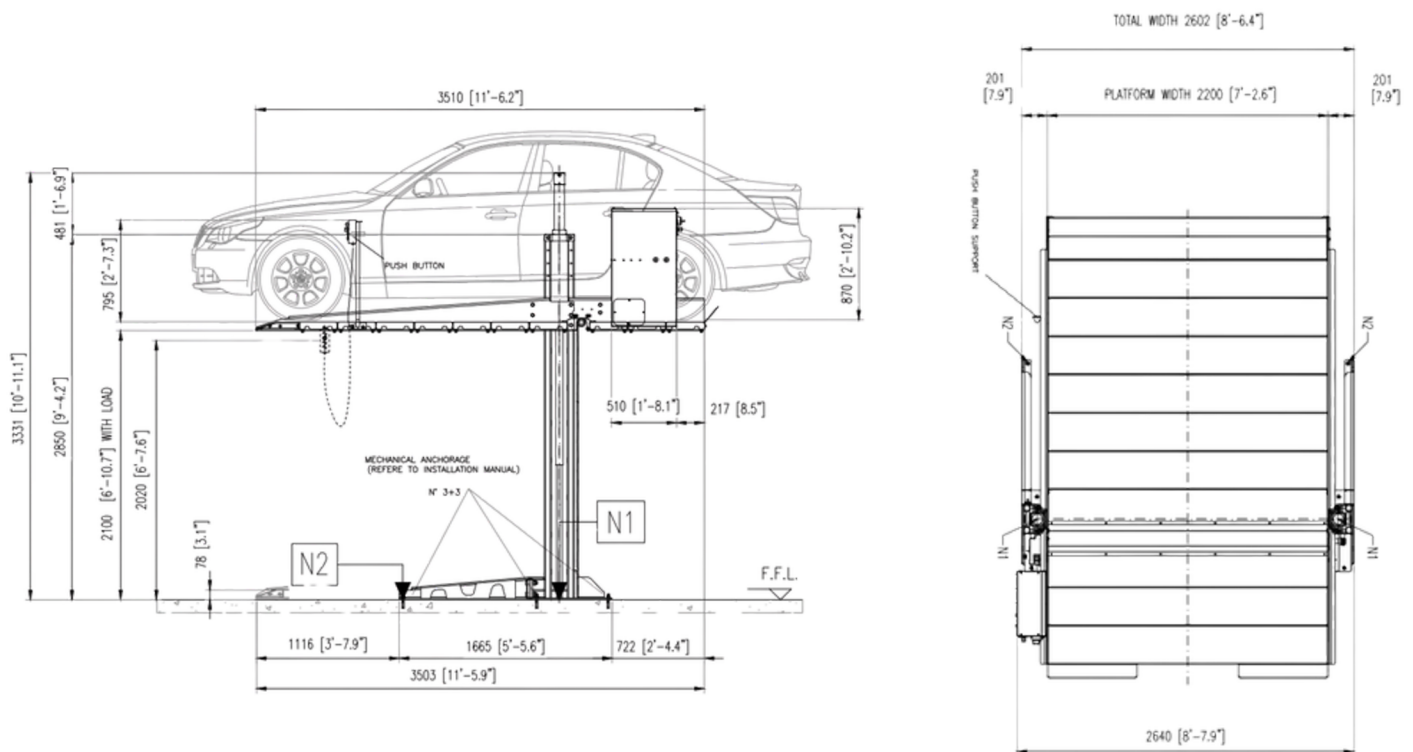
The various BiPark options provide a platform lift capacity up to 3,200 kg and 2,100mm lifting height, accommodating most new generation SUV's, 4 wheel drive vehicles and low clearance sports cars.

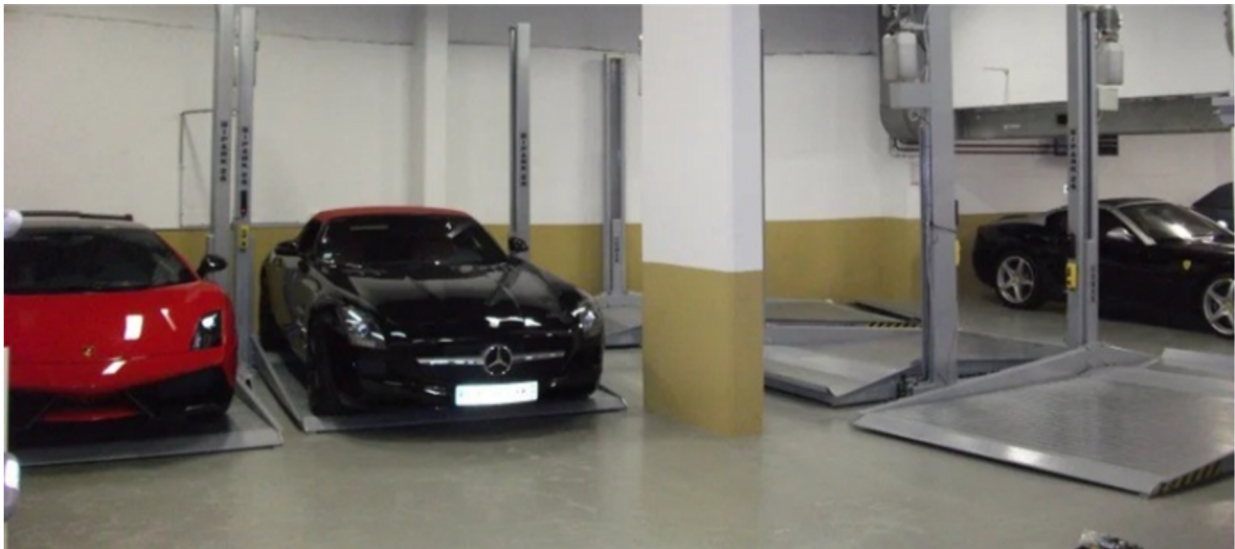
As the BiPark's do not require a pit, they can retrofitted into existing structures.

SPECIFICATION TABLE

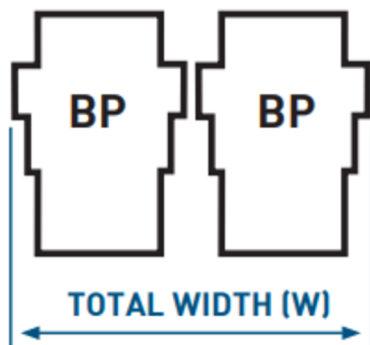
	Max. Capacity	Standard Lifting Height	Max. Lifting Height	Standard Platform	Net Height	Pit	Power	Speed	Power supply	Standard Weight	
BIPARK 3021	3,000 kg	2,100 mm	2,100 mm	2,200mm x 3,510 mm	2,050 mm	N/A	1.5 kw	0,03 m/s	415 v / 50 Hz	1,100 kg	
BIPARK 3021EW	3,000 kg	2,100 mm	2,100 mm	2,400mm x 3,510 mm	2,050 mm	N/A	1.5 kw	0,03 m/s	415 v / 50 Hz	1,270 kg	

BIPARK 3021





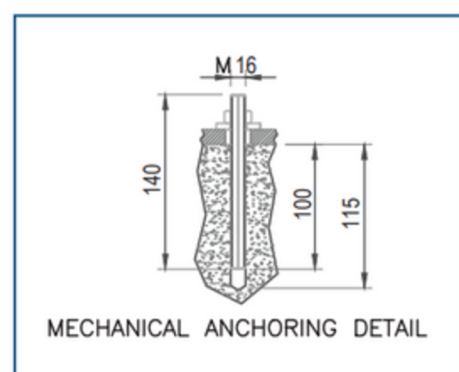
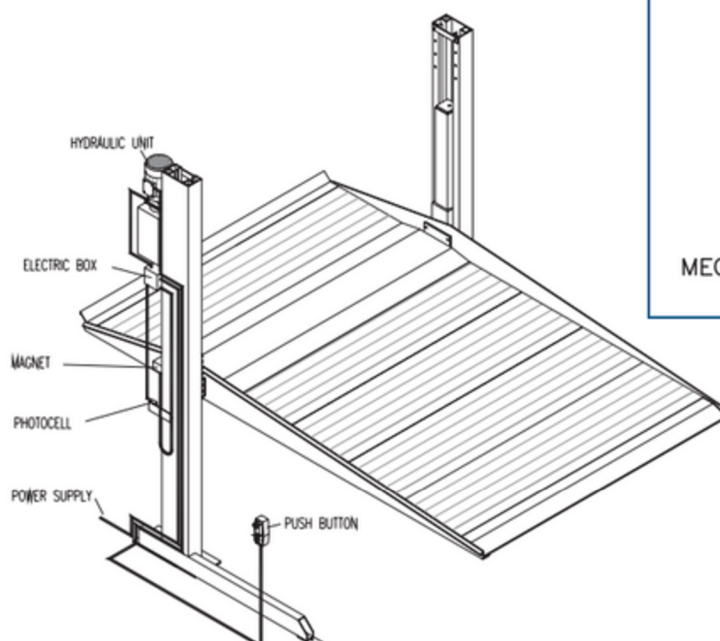
MULTIPLE CAR STACKERS - WIDTH REQUIREMENTS



No. of Bays	Minimum Width required in mm (W)	Total Cars Parked (S)
2	5250	4
3	7860	6
4	10480	8
5	13100	10
6	15720	12
7	18340	14
8	20960	16

*Dimensions based on BIPARK 2618

CABLE CONNECTION LAYOUT



For enquiries please contact us at info@hlsequipment.com

DESCRIPTION	BIPARK 26	BIPARK 26 H21	BIPARK 32	NOTES
Standard colours: BLUE RAL 5005 and SILVER RAL 9006	■	■	■	
2 columns complete with lifting cylinders	■	■	■	
1 standard platform	■	■	■	W 2200 mm x L 3619 mm.
1 torsion bar	■	■	■	
1 front wheel stop bar	■	■	■	
1 "dead man" push-button board	■	■	■	
1 hydraulic control unit with motor 1,5KW	■	■	■	
Power Supply: 415V/3Ph/50Hz	■	■	■	
Adjustable stopping height	■	■	■	
Mechanical and electrical safety devices	■	■	■	
Nylon Package	■	■	■	
Push-button board support	□	□	□	
Waterproof galvanised cover for control unit for outdoor installation	□	□	□	
Waterproof push-button board IP 65	□	□	□	
Top Cover (nr. 2 pieces)	□	□	□	
Flashing light	□	□	□	
Audible warning kit	□	□	□	
Emergency manual pump	□	□	□	
Vehicle Presence Sensor under the Platform	□	□	□	
Vehicle Presence Sensor above the Platform	□	□	□	
Non standard power supply - 240V/1Ph/50Hz	□	□	□	
Identical Keys for a set of Biparks	□	□	□	
Different keys for a set of Biparks	□	□	□	Max 10 different keys
Hot Galvanised metal finish	□	□	□	Columns, guides, columns connection plate, platform profile, ramp and wheel stop



Designed for Australian site conditions



Engineered & Manufactured in Europe

COMPLIANCE DATA

BIPARK SYSTEMS CONFORM TO:

- AS 3000
- AS Part 1601
- ISO 9001
- AS 60204
- AS1217.1
- EN14010

Please note: Dimensions and drawings within this technical specification are to be used as a guide only. Consultation with HLS Equipment is required for all projects.

Product of



For enquiries please contact us at info@hlsequipment.com